

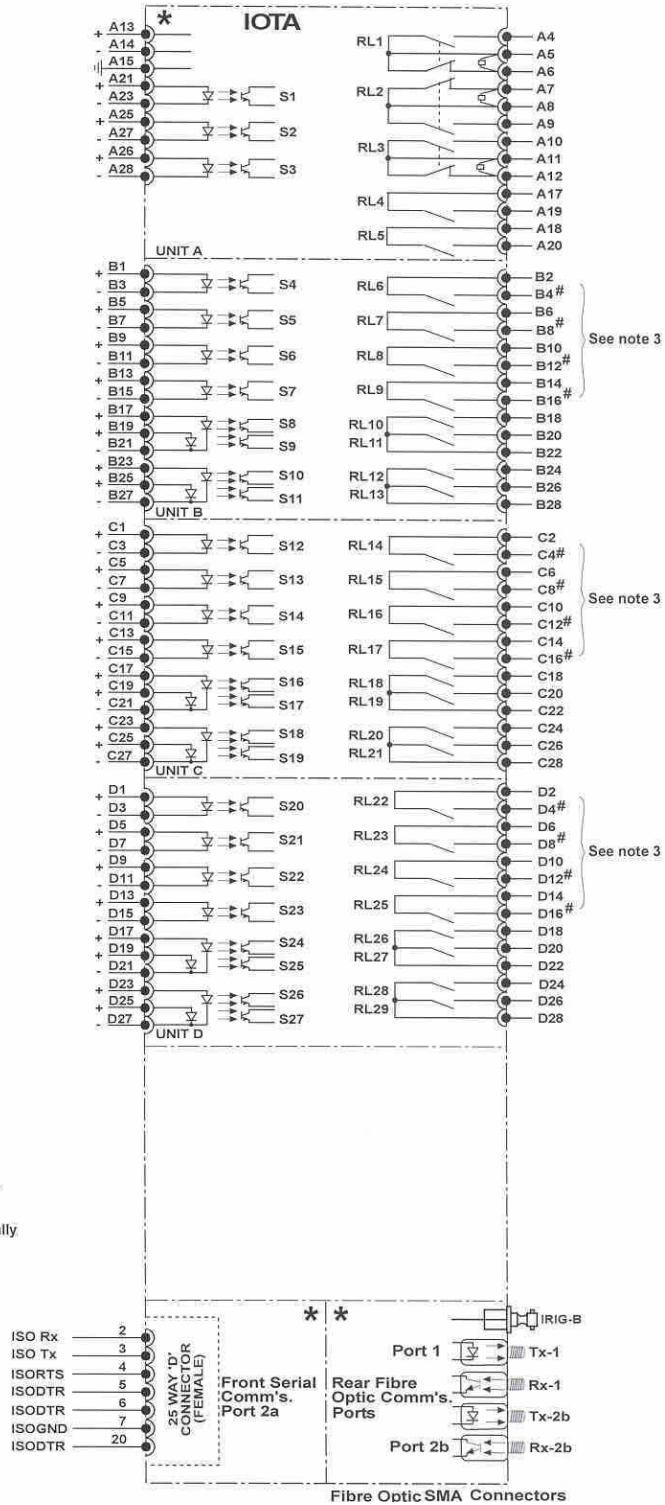
Contents

Figure 1 IOTA Relay Connections

Overall dimensions and panel drillings

Epsilon E8 2995X10008

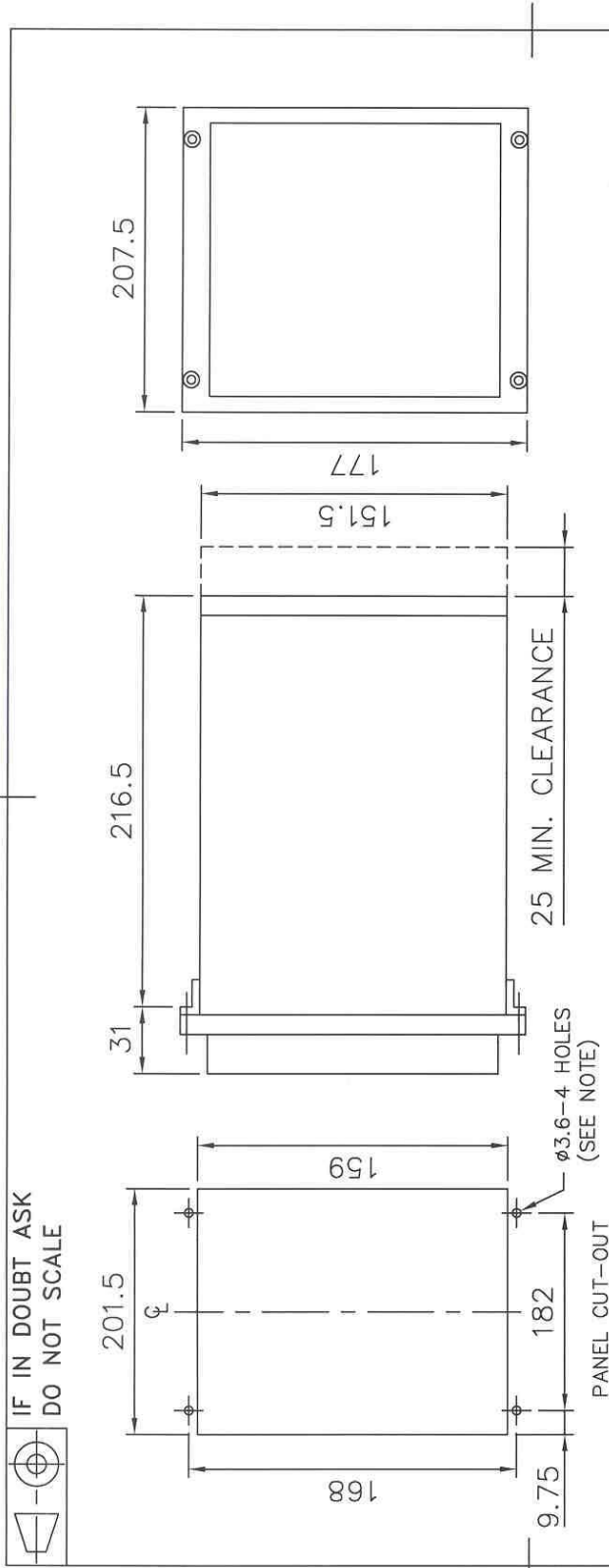
Epsilon E12 2995x10012



Notes:

1. Units B, C, & D are optional to provide extra status inputs/plant control outputs.
2. Modules marked thus * are always provided Other modules are provided dependant on the IOTA model number
3. Contacts marked # may be specified as normally closed if required.

Figure 1
Iota Relay Connections



NOTE:
 THE $\phi 3.6$ HOLES ARE FOR M4 THREAD FORMING (TRILOBULAR) SCREWS. THESE ARE SUPPLIED AS STANDARD AND ARE SUITABLE FOR USE IN FERROUS/ALUMINIUM PANELS 1.6mm THICK AND ABOVE. FOR OTHER PANELS, HOLES TO BE M4 CLEARANCE (TYPICALLY $\phi 4.5$) AND RELAYS MOUNTED USING M4 MACHINE SCREWS, NUTS AND LOCKWASHERS (SUPPLIED IN PANEL FIXING KIT).

MATERIAL:

Dimensions in millimetres : Surface texture in micrometres.
 Machine where marked ✓
 For explanation of dimensions, tolerances, notes etc. see B.S.308.
 Limit on untoleranced unmachined dimensions \pm _____
 i.e. up to 6 \pm 0.1; over 30 to 120 \pm 0.3; over 315 \pm 0.8;
 over 6 to 30 \pm 0.2; over 120 to 315 \pm 0.5;
 General unmachined angular tolerance \pm _____

Copyright © 1999 Reyrolle Ltd.		1	12/07/99	ISSUE	DATE	CHANGE	NOTED
Title:		OVERALL DIMENSIONS AND PANEL DRILLING FOR EPSILON E8 CASE.					
Finish:		Reyrolle Protection Hebburn.					
Treatment:		NTS					
DATE:		EAC		CE.		A4h	
DRAWN: T.CARR		CHECKED:		APPROVED:		EAC	
PCP.		Purch. Spec.		TQ.		EAC	
Original Scale:		2995X10008					
Supersedes:		2995X10008					
Similar Articles:		2995X10008					
First used on:		2995X10008					

